



Umlenkrollen, 1-teilig

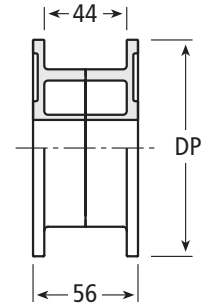
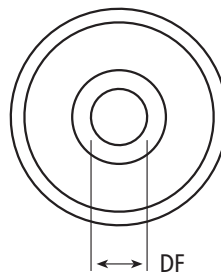
für Ketten der Serien 815 – 820 – 828 – 831 – 879 – 879 M
880 – 880 M – 881 – 881 M – 900

Nabenbreite: 56 mm

Single piece idler wheels

for chains series: 815 – 820 – 828 – 831 – 879 – 879 M
880 – 880 M – 881 – 881 M – 900

Hub width: 56 mm / 2.20 inch



| Artikel Nr. Part No. | vergleichb. Zähnezahl equiv. no. of teeth | Bohrung Bore + 0,3 DF in mm | Außen-Ø Outer dia. DP in mm / inch | Gewicht Weight kg per St. / pc. |
|-------------------------|--|-----------------------------------|--|---------------------------------------|
| 815-19-25-UL | 19 | 25 | 117 / 4.61 | 0,20 |
| 815-19-30-UL | | 30 | | |
| 815-19-35-UL | | 35 | | |
| 815-19-40-UL | | 40 | | |
| 815-21-25-UL | 21 | 25 | 129 / 5.08 | 0,20 |
| 815-21-30-UL | | 30 | | |
| 815-21-35-UL | | 35 | | |
| 815-21-40-UL | | 40 | | |
| 815-23-25-UL | 23 | 25 | 141 / 5.55 | 0,30 |
| 815-23-30-UL | | 30 | | |
| 815-23-35-UL | | 35 | | |
| 815-23-40-UL | | 40 | | |
| 815-25-25-UL | 25 | 25 | 153 / 6.02 | 0,30 |
| 815-25-30-UL | | 30 | | |
| 815-25-35-UL | | 35 | | |
| 815-25-40-UL | | 40 | | |

Umlenkrollen, 2-teilig

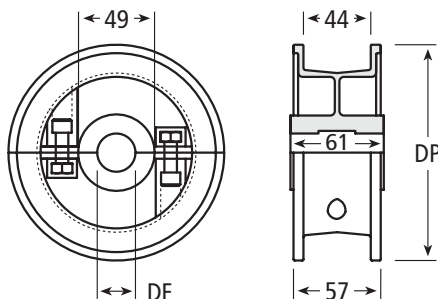
für Ketten der Serien 815 – 820 – 828 – 831 – 879 – 879 M
880 – 880 M – 881 – 881 M – 900

Nabenbreite: 61 mm

Split idler wheels

for chains series: 815 – 820 – 828 – 831 – 879 – 879 M
880 – 880 M – 881 – 881 M – 900

Hub width: 61 mm / 2.40 inch



| Artikel Nr. Part No. | vergleichb. Zähnezahl equiv. no. of teeth | Bohrung Bore + 0,3 DF in mm | Außen-Ø Outer dia. DP in mm / inch | Gewicht Weight kg per St. / pc. |
|-------------------------|--|-----------------------------------|--|---------------------------------------|
| 815-21-25-ULT | 21 | 25 | 129 / 5.08 | 0,30 |
| 815-21-30-ULT | | 30 | | |
| 815-21-35-ULT | | 35 | | |
| 815-21-40-ULT | | 40 | | |
| 815-23-25-ULT | 23 | 25 | 141 / 5.55 | 0,40 |
| 815-23-30-ULT | | 30 | | |
| 815-23-35-ULT | | 35 | | |
| 815-23-40-ULT | | 40 | | |
| 815-25-25-ULT | 25 | 25 | 153 / 6.02 | 0,40 |
| 815-25-30-ULT | | 30 | | |
| 815-25-35-ULT | | 35 | | |
| 815-25-40-ULT | | 40 | | |

Material: verstärktes Polyamid

Für metrische Wellen.

Abmessungen und Toleranzen siehe „techn. Informationen“ am Ende dieses Kapitels.

Weitere Abmessungen auf Anfrage möglich.

Material: reinforced polyamide

For metric shafts.

For dimensions and tolerances see „technical information“ at the end of this chapter.

Further dimensions upon request.

Umlenkrollen, 1-teilig

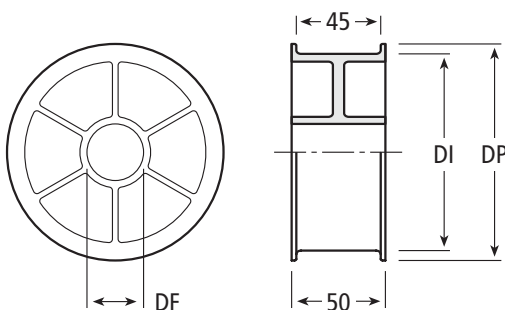
für Ketten der Serien 815 – 820 – 828 – 831 – 879 – 879 M
880 M – 881 M – 900

Nabenbreite: 50 mm

Single piece idler wheels

for chains series: 815 – 820 – 828 – 831 – 879 – 879 M
880 M – 881 M – 900

Hub width: 50 mm / 1.97 inch



| Artikel Nr. Part No. | vergleichb. Zähnezahl equiv. no. of teeth | Bohrung Bore + 0,3 DF in mm | Außen-Ø Outer dia. DP in mm / inch | Innen-Ø Inner dia. DI in mm / inch |
|-------------------------|--|-----------------------------------|--|--|
| 815-23-30-UL-50 | 23 | 30 | 141 / 5.55 | 127 / 5.00 |
| 815-23-35-UL-50 | | 35 | | |
| 815-23-40-UL-50 | | 40 | | |
| 815-25-30-UL-50 | 25 | 30 | 153 / 6.02 | 139 / 5.47 |
| 815-25-35-UL-50 | | 35 | | |
| 815-25-40-UL-50 | | 40 | | |





Umlenkrollen, 1-teilig

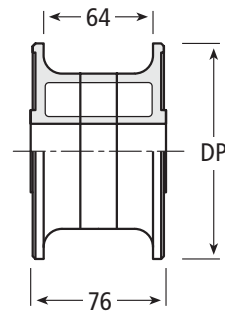
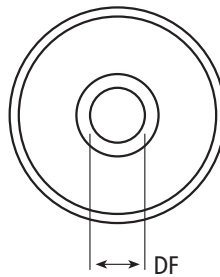
für Ketten der Serien 879 TAB – 880 TAB – 881 TAB

Nabenbreite: 76 mm

Single piece idler wheels

for chains series: 879 TAB – 880 TAB – 881 TAB

Hub width: 76 mm / 2.99 inch



| Artikel Nr. Part No. | vergleichb. Zähnezahl equiv. no. of teeth | Bohrung Bore + 0,3 DF in mm | Außen-Ø Outer dia. DP in mm / inch | Gewicht Weight kg per St. / pc. |
|-------------------------|--|-----------------------------------|--|---------------------------------------|
| 881-19-25-UL | 19 | 25 | 117 / 4.61 | 0,30 |
| 881-19-30-UL | | 30 | | |
| 881-19-35-UL | | 35 | | |
| 881-19-40-UL | | 40 | | |
| 881-21-25-UL | 21 | 25 | 129 / 5.08 | 0,30 |
| 881-21-30-UL | | 30 | | |
| 881-21-35-UL | | 35 | | |
| 881-21-40-UL | | 40 | | |
| 881-23-25-UL | 23 | 25 | 141 / 5.55 | 0,30 |
| 881-23-30-UL | | 30 | | |
| 881-23-35-UL | | 35 | | |
| 881-23-40-UL | | 40 | | |
| 881-25-25-UL | 25 | 25 | 153 / 6.02 | 0,40 |
| 881-25-30-UL | | 30 | | |
| 881-25-35-UL | | 35 | | |
| 881-25-40-UL | | 40 | | |

Umlenkrollen, 1-teilig

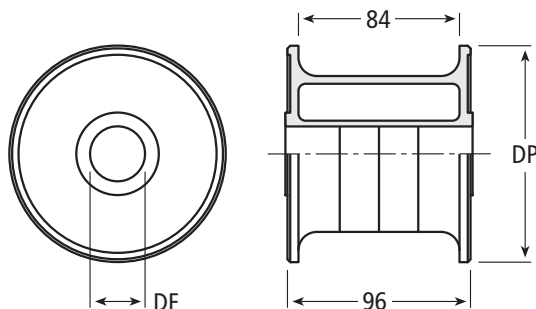
für Ketten der Serien 800 – 802 – 805

Nabenbreite: 96 mm

Single piece idler wheels

for chains series: 800 – 802 – 805

Hub width: 96 mm / 3.78 inch



| Artikel Nr. Part No. | vergleichb. Zähnezahl equiv. no. of teeth | Bohrung Bore + 0,3 DF in mm | Außen-Ø Outer dia. DP in mm / inch | Gewicht Weight kg per St. / pc. |
|-------------------------|--|-----------------------------------|--|---------------------------------------|
| 802-19-25-UL | 19 | 25 | 117 / 4.61 | 0,30 |
| 802-19-30-UL | | 30 | | |
| 802-19-35-UL | | 35 | | |
| 802-19-40-UL | | 40 | | |
| 802-21-25-UL | 21 | 25 | 129 / 5.08 | 0,30 |
| 802-21-30-UL | | 30 | | |
| 802-21-35-UL | | 35 | | |
| 802-21-40-UL | | 40 | | |
| 802-23-25-UL | 23 | 25 | 141 / 5.55 | 0,30 |
| 802-23-30-UL | | 30 | | |
| 802-23-35-UL | | 35 | | |
| 802-23-40-UL | | 40 | | |
| 802-25-25-UL | 25 | 25 | 153 / 6.02 | 0,40 |
| 802-25-30-UL | | 30 | | |
| 802-25-35-UL | | 35 | | |
| 802-25-40-UL | | 40 | | |

Material: verstärktes Polyamid

Für metrische Wellen.

Abmessungen und Toleranzen siehe „techn. Informationen“ am Ende dieses Kapitels.

Weitere Abmessungen auf Anfrage möglich.

Material: reinforced polyamide

For metric shafts.

For dimensions and tolerances see „technical information“ at the end of this chapter.

Further dimensions upon request.





Umlenkrollen, 1-teilig

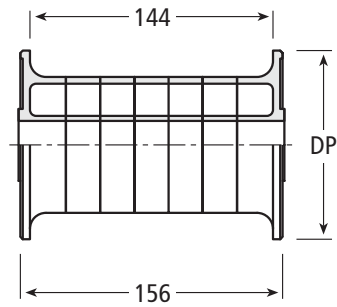
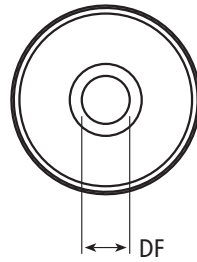
für Ketten der Serien 821

Nabenbreite: 156 mm

Single piece idler wheels

for chains series: 821

Hub width: 156 mm / 6.14 inch



| Artikel Nr. Part No. | vergleichb. Zähnezah equiv. no. of teeth | Bohrung Bore + 0,3 DF in mm | Außen-Ø Outer dia. DP in mm / inch | Gewicht Weight kg per St. / pc. |
|-------------------------|---|-----------------------------------|--|---------------------------------------|
| 821-19-25-UL | 19 | 25 | 117 / 4.61 | 0,30 |
| 821-19-30-UL | | 30 | | |
| 821-19-35-UL | | 35 | | |
| 821-19-40-UL | | 40 | | |
| 821-21-25-UL | 21 | 25 | 129 / 5.08 | 0,30 |
| 821-21-30-UL | | 30 | | |
| 821-21-35-UL | | 35 | | |
| 821-21-40-UL | | 40 | | |
| 821-23-25-UL | 23 | 25 | 141 / 5.55 | 0,30 |
| 821-23-30-UL | | 30 | | |
| 821-23-35-UL | | 35 | | |
| 821-23-40-UL | | 40 | | |
| 821-25-25-UL | 25 | 25 | 153 / 6.02 | 0,40 |
| 821-25-30-UL | | 30 | | |
| 821-25-35-UL | | 35 | | |
| 821-25-40-UL | | 40 | | |

Umlenkrollen mit Gleitlager, 1-teilig

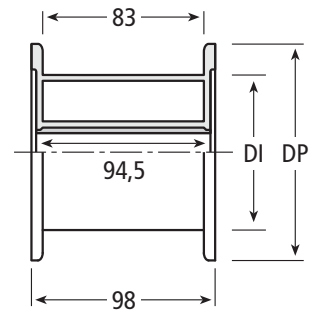
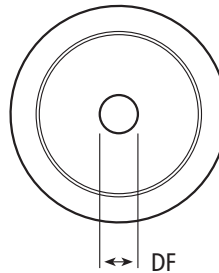
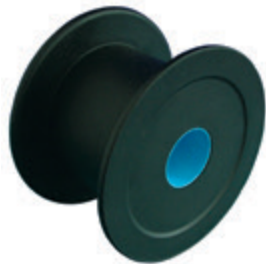
für Ketten der Serien 800 – 802 – 805

Nabenbreite: 94,5 mm

Single piece idler wheels with low friction bushing

for chains series: 800 – 802 – 805

Hub width: 94.5 mm / 3.72 inch



| Artikel Nr. Part No. | vergleichb. Zähnezah equiv. no. of teeth | Bohrung Bore + 0,3 DF in mm | Außen-Ø Outer dia. DP in mm / inch | Innen-Ø Inner dia. DI in mm / inch |
|-------------------------|---|-----------------------------------|--|--|
| 802-25-30-UL-LF | 25 | 30 | 154,5 / 6.08 | 103,5 / 4.07 |
| 802-25-40-UL-LF | | 40 | | |

Umlenkrollen mit Gleitlager, 1-teilig

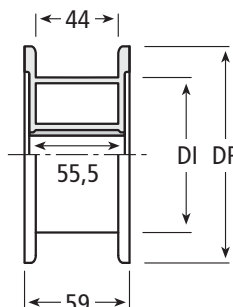
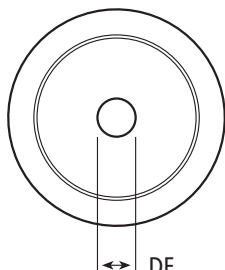
für Ketten der Serien 815 – 820 – 828 – 831 – 879 – 879 M
880 – 880 M – 881 – 881 M – 900

Nabenbreite: 55,5 mm

Single piece idler wheels with low friction bushing

for chains series: 815 – 820 – 828 – 831 – 879 – 879 M
880 – 880 M – 881 – 881 M – 900

Hub width: 55.5 mm / 2.19 inch



| Artikel Nr. Part No. | vergleichb. Zähnezahl equiv. no. of teeth | Bohrung Bore + 0,3 DF in mm | Außen-Ø Outer dia. DP in mm / inch | Innen-Ø Inner dia. DI in mm/inch |
|-------------------------|--|-----------------------------------|--|--|
| 815-21-25-UL-LF | 21 | 25 | 129,5 / 5.10 | 103,5 / 4.07 |
| 815-21-30-UL-LF | | 30 | | |
| 815-21-35-UL-LF | | 35 | | |
| 815-21-40-UL-LF | | 40 | | |
| 815-23-25-UL-LF | 23 | 25 | 143 / 5.63 | 103,5 / 4.07 |
| 815-23-30-UL-LF | | 30 | | |
| 815-23-35-UL-LF | | 35 | | |
| 815-23-40-UL-LF | | 40 | | |
| 815-25-25-UL-LF | 25 | 25 | 154,5 / 6.08 | 103,5 / 4.07 |
| 815-25-30-UL-LF | | 30 | | |
| 815-25-40-UL-LF | | 40 | | |

Material:

- Rollenkörper aus verstärktem Polyamid.
- Gleitlager aus selbstschmierendem Hochleistungswerkstoff mit hervorragenden tribologischen Eigenschaften.
- Verschraubung aus Edelstahl 1.4301.

Für metrische Wellen.

Abmessungen und Toleranzen siehe „techn. Informationen“ am Ende dieses Kapitels.

Weitere Abmessungen auf Anfrage möglich.

Material:

- Idler body in reinforced polyamide.
- Bushing in self-lubricating high-level material with excellent tribological characteristics.
- Screws in stainless steel AISI 304.

For metric shafts.

For dimensions and tolerances see „technical information“ at the end of this chapter.

Further dimensions upon request.

Umlenkrollen mit Gleitlager, 2-teilig

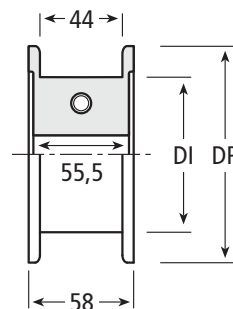
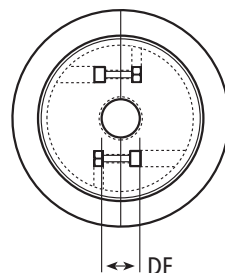
für Ketten der Serien 815 – 820 – 828 – 831 – 879 – 879 M
880 – 880 M – 881 – 881 M – 900

Nabenbreite: 55,5 mm

Split idler wheels with low friction bushing

for chains series: 815 – 820 – 828 – 831 – 879 – 879 M
880 – 880 M – 881 – 881 M – 900

Hub width: 55.5 mm / 2.19 inch



| Artikel Nr. Part No. | vergleichb. Zähnezahl equiv. no. of teeth | Bohrung Bore + 0,3 DF in mm | Außen-Ø Outer dia. DP in mm / inch | Innen-Ø Inner dia. DI in mm / inch |
|-------------------------|--|-----------------------------------|--|--|
| 815-21-30-ULT-LF | 21 | 30 | 129,5 / 5.10 | 103,5 / 4.07 |
| 815-21-40-ULT-LF | | 40 | | |

