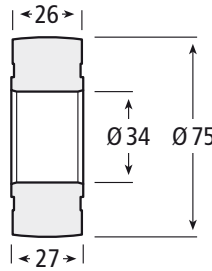


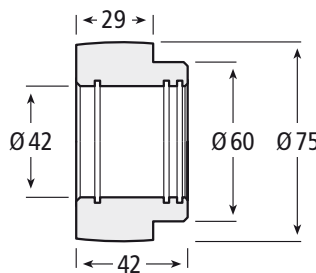
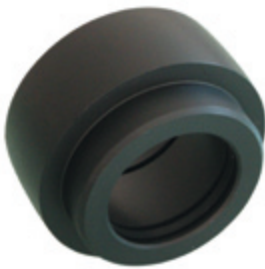
Abzugsrolle Pull-down roller



Artikel-Nr. | Part No.
106.0006-1

Material: Kunststoff | Plastic
Farbe | Colour: ■

Kurvenrolle Cam follower

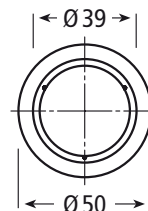


Artikel-Nr. | Part No.
106.0007

Material: Kunststoff | Plastic
Farbe | Colour: ■



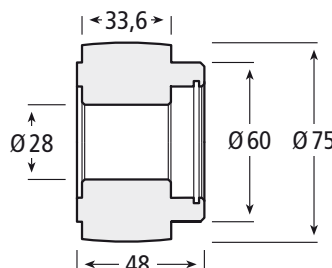
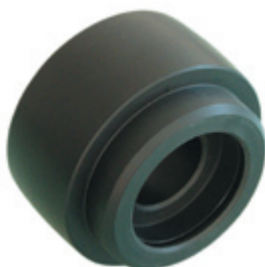
Kappe zur Kurvenrolle Protective cap for cam follower



Artikel-Nr. | Part No.
106.0212

Material: Kunststoff | Plastic
Farbe | Colour: ■

Kurvenrolle Cam follower



Artikel-Nr. | Part No.
106.0030

Material: Kunststoff | Plastic
Farbe | Colour: ■

Unsere Rollen wurden speziell für die abfüllenden & verpackenden Industrien entwickelt und zeichnen sich, je nach Werkstoff, aus durch:

- Geringen Rollwiderstand
- Höchste Laufruhe
- Hohe Flächenpressung
- Geringe Verformung
- Gute dynamische Belastbarkeit
- Hohes Festigkeitsniveau

Weitere Abmessungen auf Anfrage möglich.

Our rollers are specially developed for the filling & packaging industries and stand out, depending on material, due to characteristic features such as:

- Low rolling resistance
- Silent running
- High contact pressure
- Low deformation
- Good dynamic carrying capacity
- High stability levels

Further dimensions upon request.

